

PowerXL™

DE1, DC1, DB1, DA1
DX-COM-STICK3 Connection



Level 2	1 – Fundamental – No previous experience necessary 2 – Basic – Basic knowledge recommended 3 – Advanced – Reasonable knowledge required 4 – Expert – Good experience recommended
---------	---

Content

1	Danger! - Dangerous electrical voltage!.....	3
2	Disclaimer	4
3	Connection to the PC.....	5
3.1	How to connect a PowerXL device to drivesConnect software	7
4	How to connect a PowerXL device with the App drivesConnect mobile	10
5	DX-COM-STICK3 offline for parameter copy	11
6	Boot-Sequence and Unlocking	12

1 Danger! - Dangerous electrical voltage!

- Disconnect the power supply of the device.
- Ensure that devices cannot be accidentally restarted.
- Verify isolation from the supply.
- Cover or enclose any adjacent live components.
- Follow the engineering instructions (AWA/IL) for the device concerned.
- Only suitably qualified personnel in accordance with EN 50110-1/-2 (VDE 0105 Part 100) may work on this device/system.
- Before installation and before touching the device ensure that you are free of electrostatic charge.
- The functional earth (FE, PES) must be connected to the protective earth (PE) or the potential equalization. The system installer is responsible for implementing this connection.
- Connecting cables and signal lines should be installed so that inductive or capacitive interference does not impair the automatic control functions.
- Suitable safety hardware and software measures should be implemented for the I/O interface so that an open circuit on the signal side does not result in undefined states.
- Deviations of the mains voltage from the rated value must not exceed the tolerance limits given in the specification, otherwise this may cause malfunction and/or dangerous operation.
- Emergency stop devices complying with IEC/EN 60204-1 must be effective in all operating modes. Unlatching of the emergency-stop devices must not cause a restart.
- Devices that are designed for mounting in housings or control cabinets must only be operated and controlled after they have been properly installed and with the housing closed.
- Wherever faults may cause injury or material damage, external measures must be implemented to ensure a safe operating state in the event of a fault or malfunction (e.g. by means of separate limit switches, mechanical interlocks etc.).
- Frequency inverters may have hot surfaces during and immediately after operation.
- Removal of the required covers, improper installation or incorrect operation of motor or frequency inverter may destroy the device and may lead to serious injury or damage.
- The applicable national safety regulations and accident prevention recommendations must be applied to all work carried on live frequency inverters.
- The electrical installation must be carried out in accordance with the relevant electrical regulations (e. g. with regard to cable cross sections, fuses, PE).
- Transport, installation, commissioning and maintenance work must be carried out only by qualified personnel (IEC 60364, HD 384 and national occupational safety regulations).
- Installations containing frequency inverters must be provided with additional monitoring and protective devices in accordance with the applicable safety regulations. Modifications to the frequency inverters using the operating software are permitted.
- All covers and doors must be kept closed during operation.
- To reduce the hazards for people or equipment, the user must include in the machine design measures that restrict the consequences of a malfunction or failure of the frequency inverter (increased motor speed or sudden standstill of motor). These measures include:
 - Other independent devices for monitoring safety related variables (speed, travel, end positions etc.).
 - Electrical or non-electrical system-wide measures (electrical or mechanical interlocks).
 - Never touch live parts or cable connections of the frequency inverter after it has been disconnected from the power supply. Due to the charge in the capacitors, these parts may still be alive after disconnection. Consider appropriate warning signs.

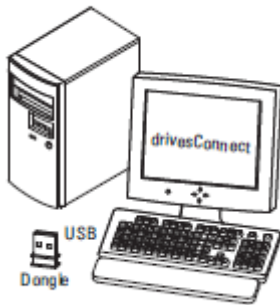
2 Disclaimer

The information, recommendations, descriptions, and safety notations in this document are based on Eaton's experience and judgment and may not cover all contingencies. If further information is required, an Eaton sales office should be consulted. Sale of the product shown in this literature is subject to the terms and conditions outlined in the applicable Terms and Conditions for Sale of Eaton or other contractual agreement between Eaton and the purchaser. THERE ARE NO UNDERSTANDINGS, AGREEMENTS, WARRANTIES, EXPRESSED OR IMPLIED, INCLUDING WARRANTIES OF FITNESS FOR A PARTICULAR PURPOSE OR MERCHANTABILITY, OTHER THAN THOSE SPECIFICALLY SET OUT IN ANY EXISTING CONTRACT BETWEEN THE PARTIES. ANY SUCH CONTRACT STATES THE ENTIRE OBLIGATION OF EATON. THE CONTENTS OF THIS DOCUMENT SHALL NOT BECOME PART OF OR MODIFY ANY CONTRACT BETWEEN THE PARTIES. As far as applicable mandatory law allows so, in no event will Eaton be responsible to the purchaser or user in contract, in tort (including negligence), strict liability, or otherwise for any special, indirect, incidental, or consequential damage or loss whatsoever, including but not limited to damage or loss of use of equipment, plant or power system, cost of capital, loss of power, additional expenses in the use of existing power facilities, or claims against the purchaser or user by its customers resulting from the use of the information, recommendations, and descriptions contained herein. The information contained in this manual is subject to change without notice.

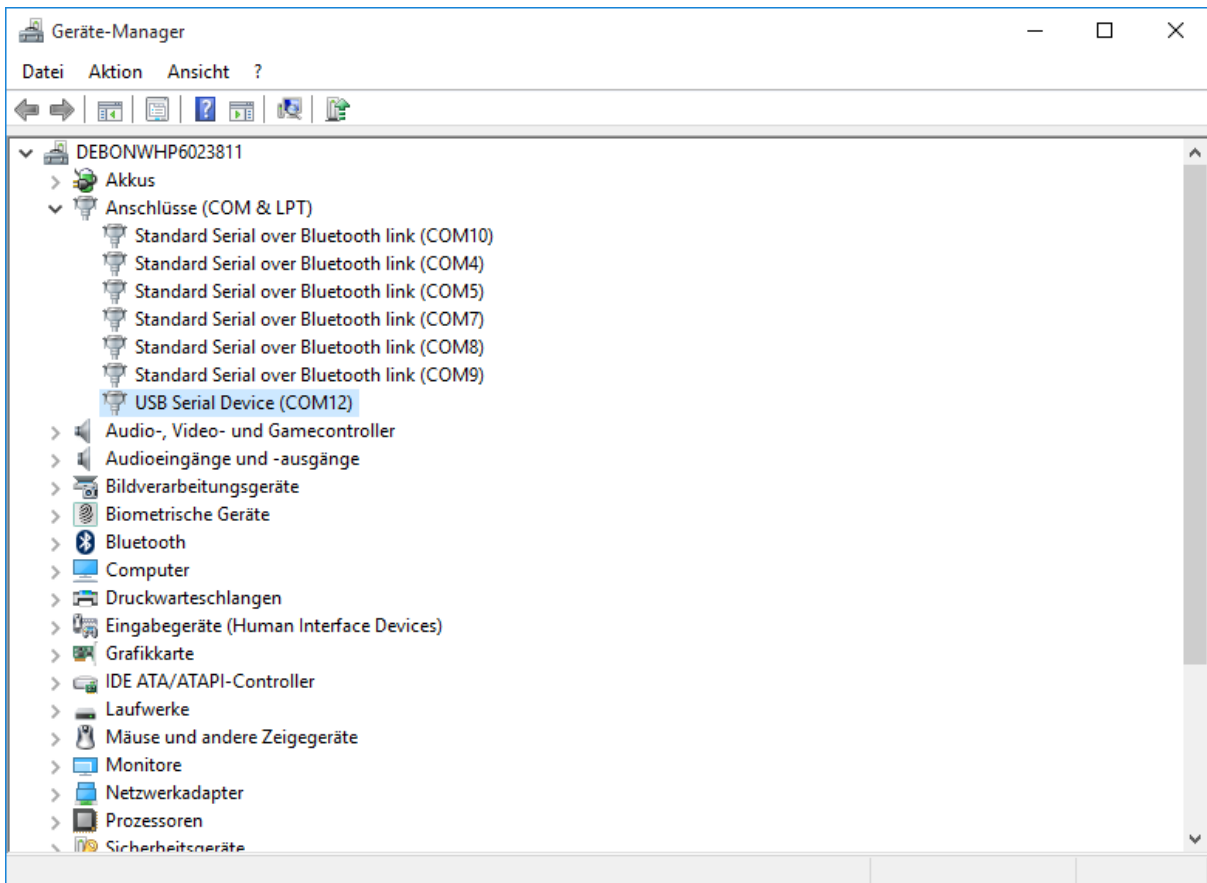
3 Connection to the PC

Connect the Bluetooth-Dongle to a free USB Port in your PC.

PC connection

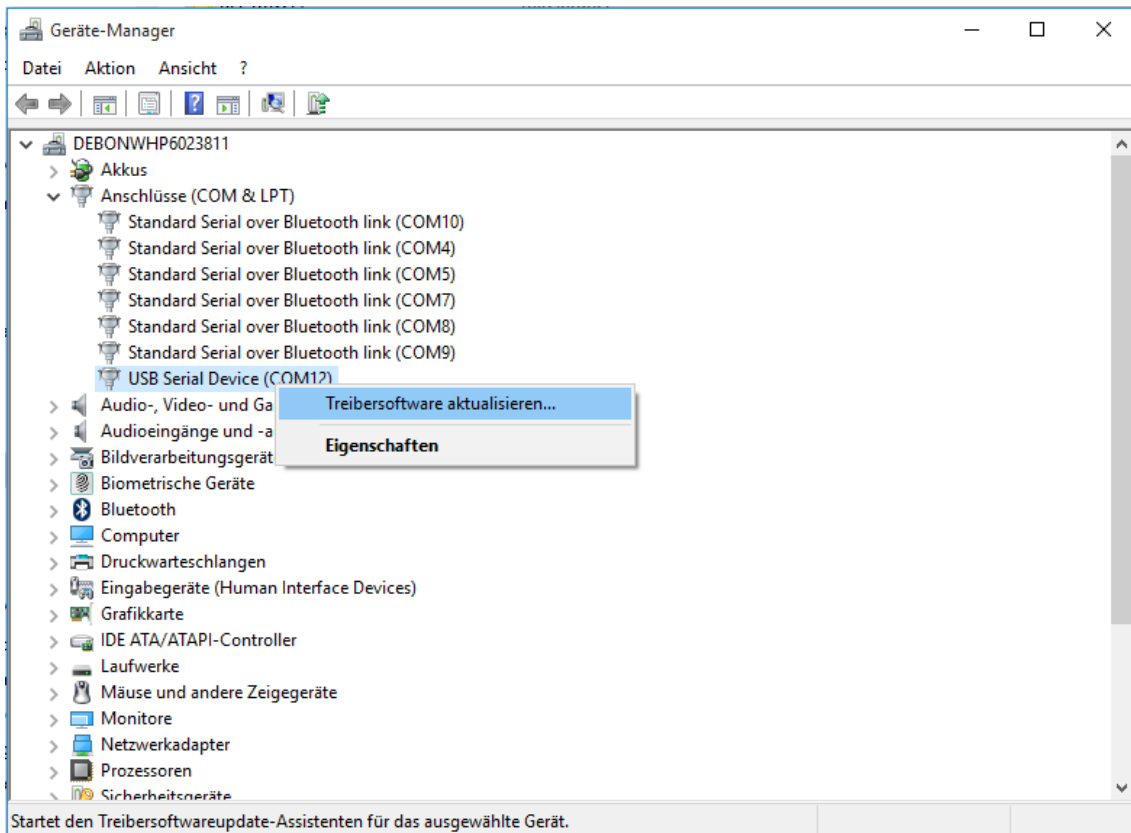


Read Out the COM-Port of the Dongle from the Device-Manager

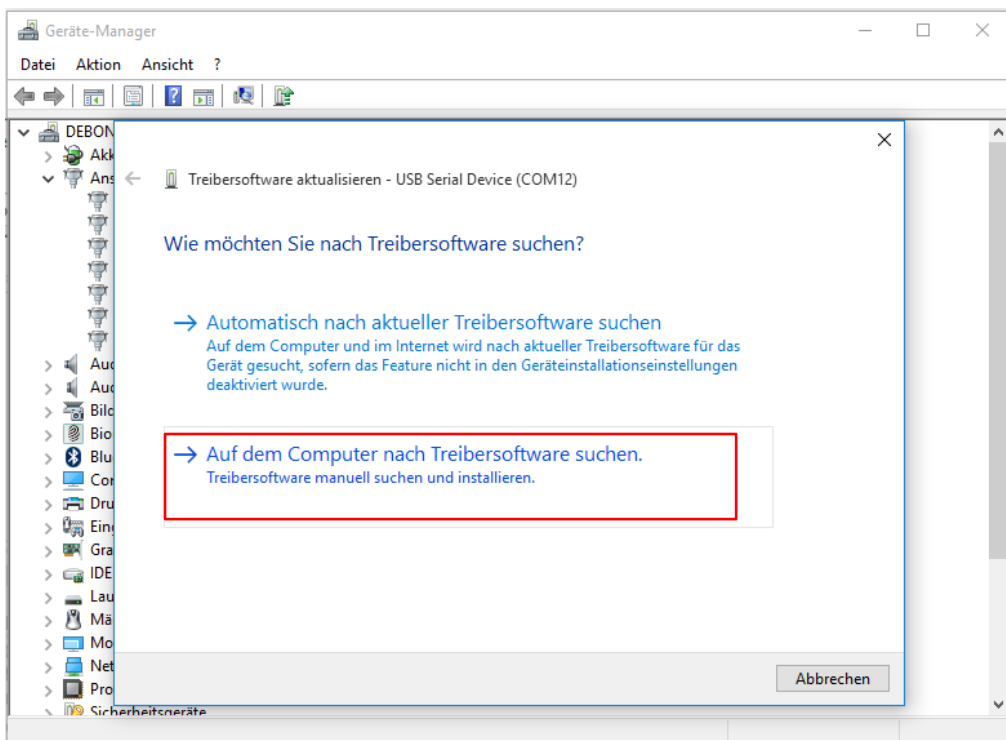


If the device driver is not installed correctly, you can download the driver on the link below.

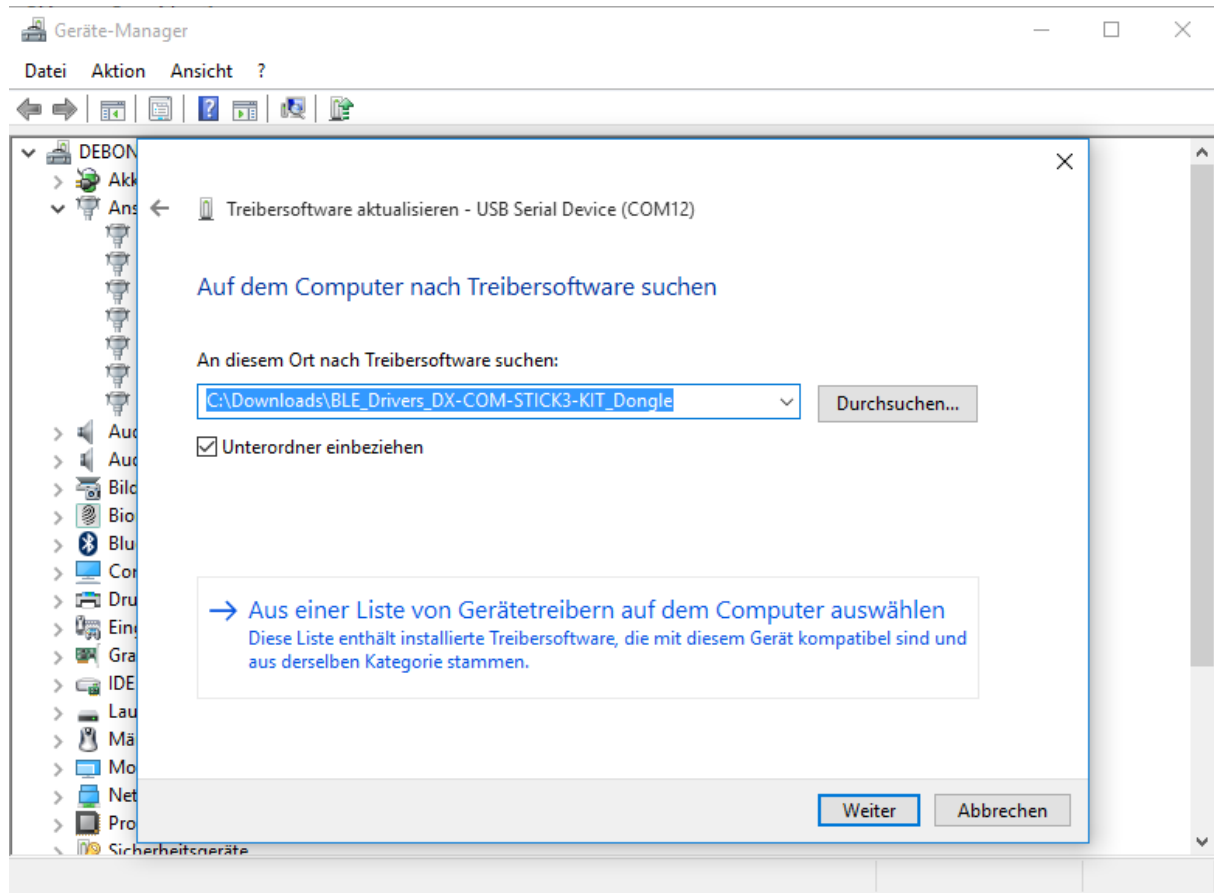
ftp://ftp.moeller.net/DRIVES/POWERXL/02_PC-SOFTWARE/1_drivesConnect/5_USB_Driver_DX-COM-STICK3-KIT/



Search manually for the driver.

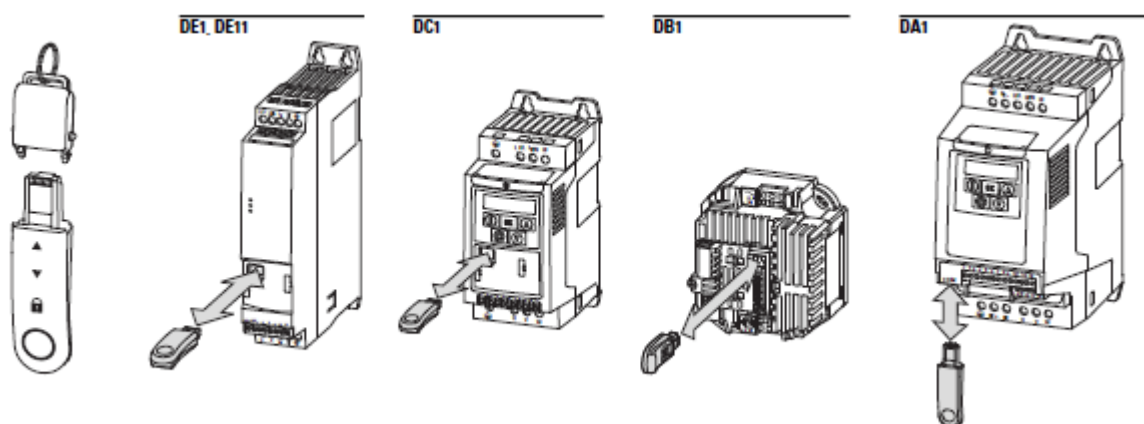


Unzip the downloaded driver, choose the correct folder and follow the installation process.

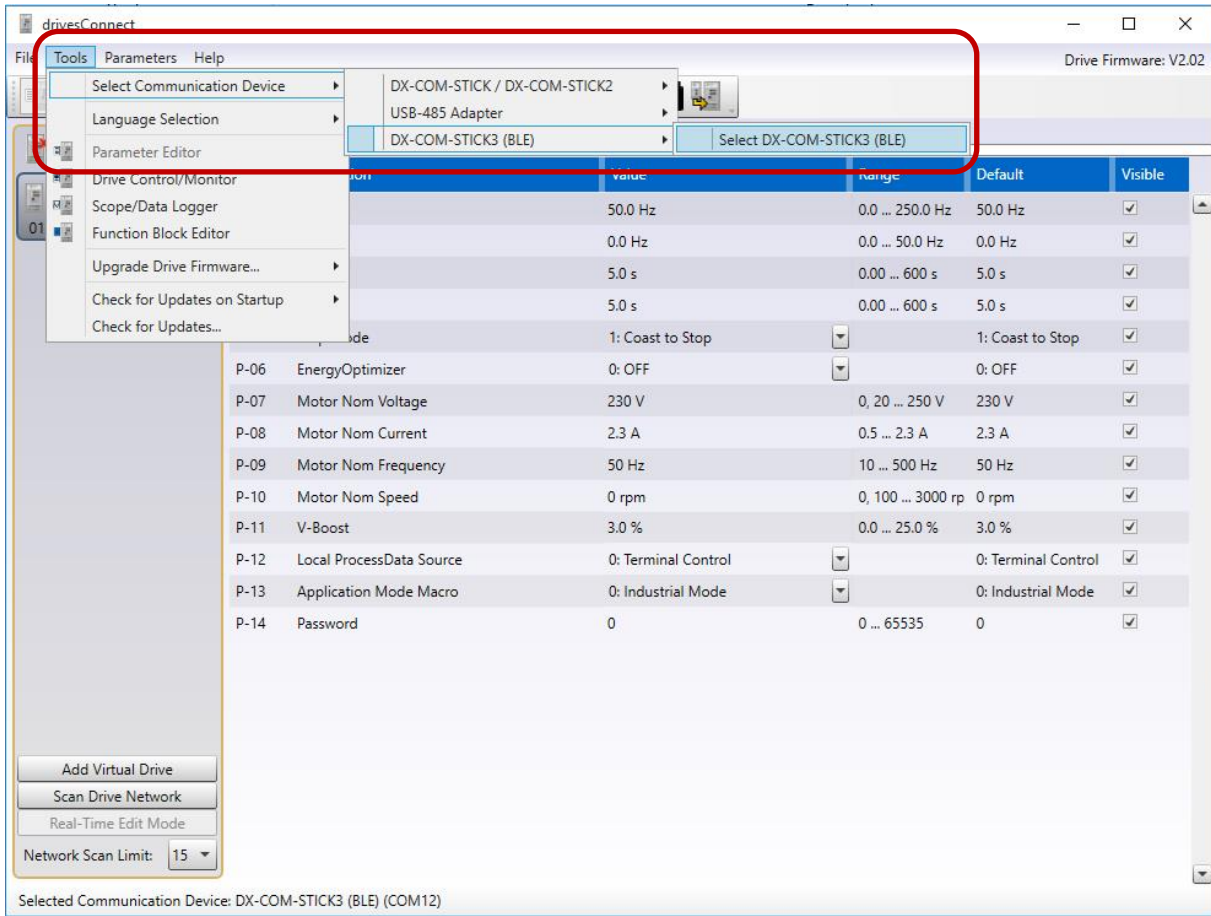


3.1 How to connect a PowerXL device to drivesConnect software

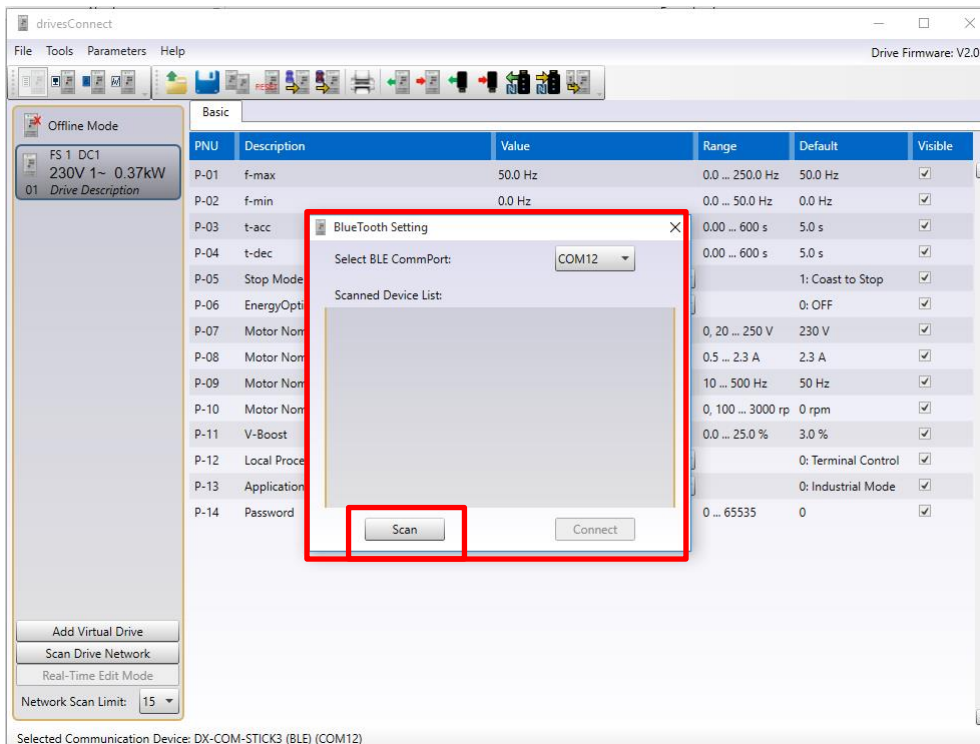
Insert the DX-COM-STICK3 device to a free RJ45 port of a PowerXL device you want to connect to.



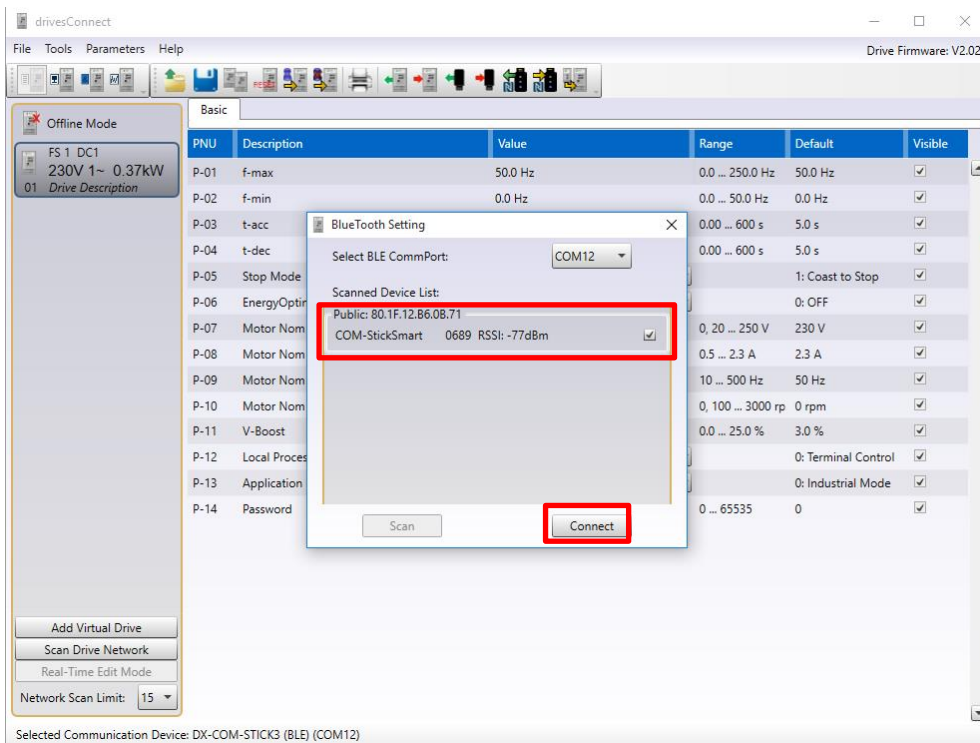
Select the DX-COM-STICK3 as active Communication Device.



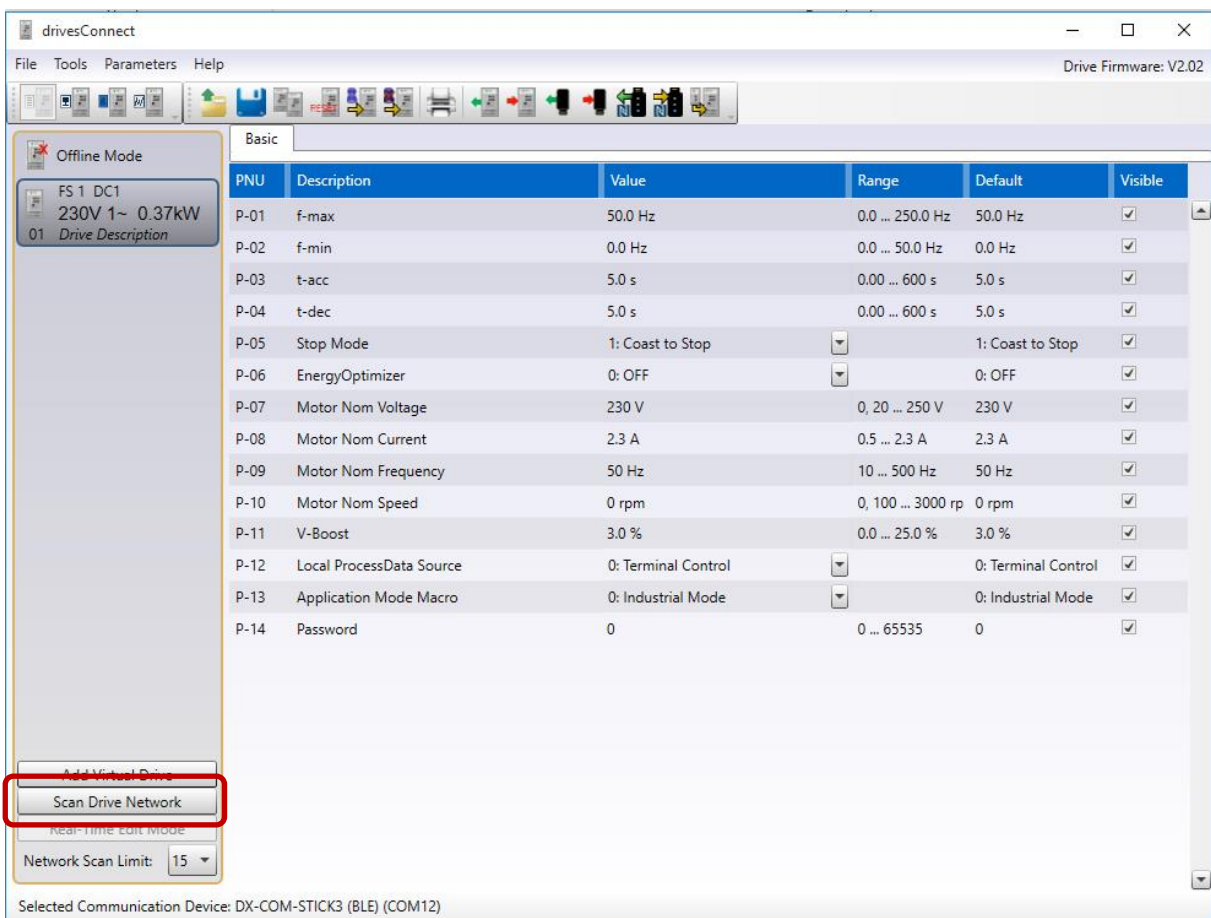
Select the COM-Port you have read out from the Device-Manager and scan for available devices.



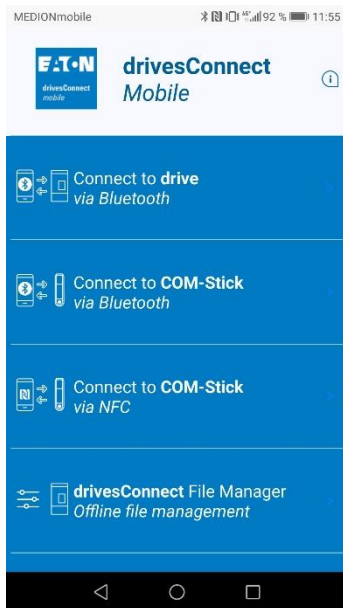
Set the checkbox on the Stick you want to use and click on connect.



Now you can use „Scan Drive Network“ to search for available devices on the network.



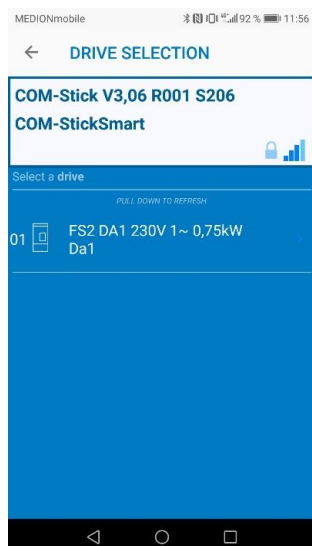
4 How to connect a PowerXL device with the App drivesConnect mobile



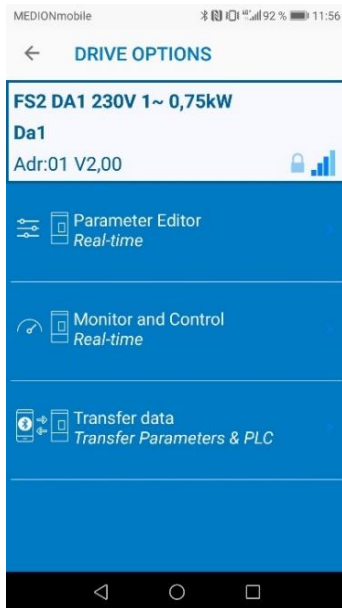
Choose „Connect to drive via Bluetooth“. Therefor the drive needs to be insert in a powered PowerXL device.



Choose the DX-COM-STICK3 you want to connect to.



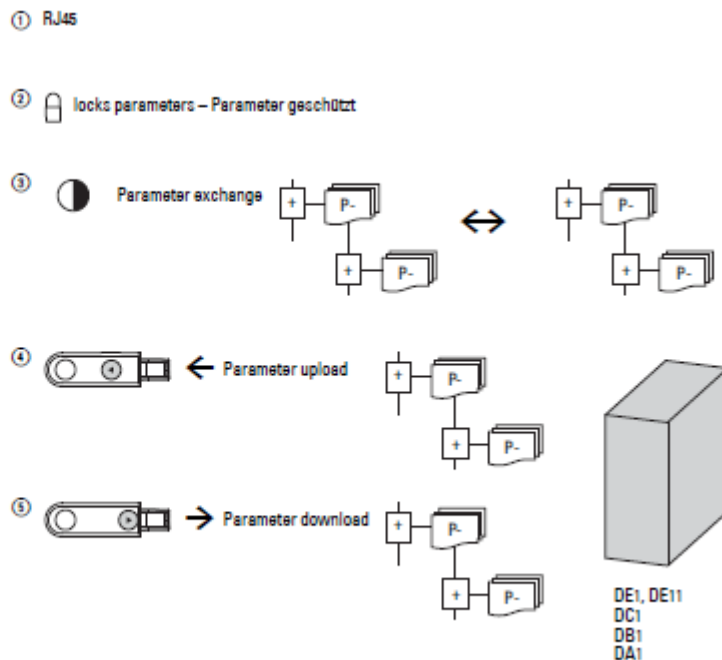
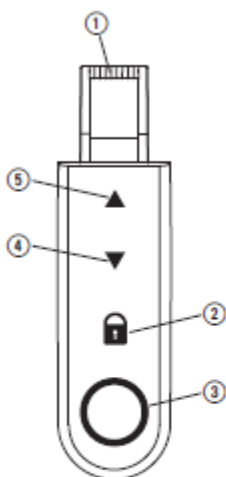
After it you can choose the PowerXL device you want to parameterize or control. If a couple of devices are linked together, you can reach all devices with one DX-COM-STICK3.



On the device itself you can read or write parameter, control or monitor in real-time and transfer parameter sets or PLC data.

5 DX-COM-STICK3 offline for parameter copy

The DX-COM-STICK3 can be used for parameter copy, without having an active connection to PC or mobile phone. There can be saved one parameterset for DE1/DC1/DB1 and one for DA1. Additional for DA1 a PLC file for copy can be saved.



6 Boot-Sequence and Unlocking



As soon as the DX-COM-STICK3 is insert in a drive it starts the boot-sequence.



If the boot-sequence is finished a green arrow and a red padlock symbol appears.



To unlock the Stick press the padlock symbol until 2 green arrows appear.