

04/03 AWA1290-2016

Montageanweisung
Installation Instructions
Notice d'installation
Istruzioni per il montaggio

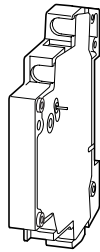
Instrucciones de montaje
Инструкция по монтажу
安装说明

MOELLER 

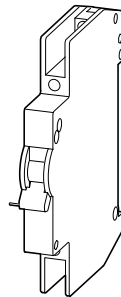
 



FIP-XHI11 FIP-XAM002

FIP-XHI11



FIP-XAM002



	$2 \times 0.5 - 2.5 \text{ mm}^2$	0.8 Nm
	$1 \times 0.5 - 2.5 \text{ mm}^2$	
DIN 46 228		



Lebensgefahr durch elektrischen Strom!
Nur Elektrofachkräfte und elektrotechnisch unterwiesene Personen dürfen die im Folgenden beschriebenen Arbeiten ausführen.

Electric current! Danger to life!

Only skilled or instructed persons may carry out the following operations.

Tension électrique dangereuse !

Seules les personnes qualifiées et averties doivent exécuter les travaux ci-après.

Tensione elettrica: Pericolo di morte!

Solo persone abilitate e qualificate possono eseguire le operazioni di seguito riportate.

¡Corriente eléctrica! ¡Peligro de muerte!

El trabajo a continuación descrito debe ser realizado por personas cualificadas y advertidas.

Электрический ток! Опасно для жизни!

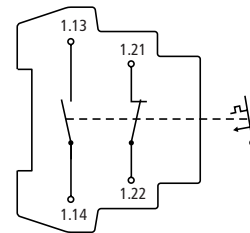
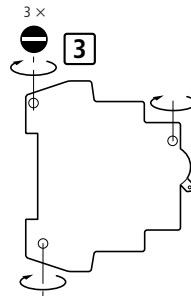
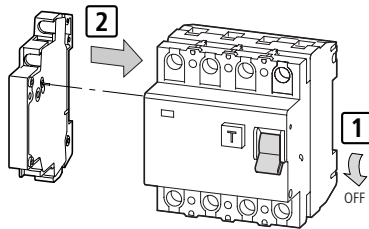
Только специалисты или проинструктированные лица могут выполнять следующие операции.

触电危险！
只允许专业人员和受过专业训练的人员进行下列工作。

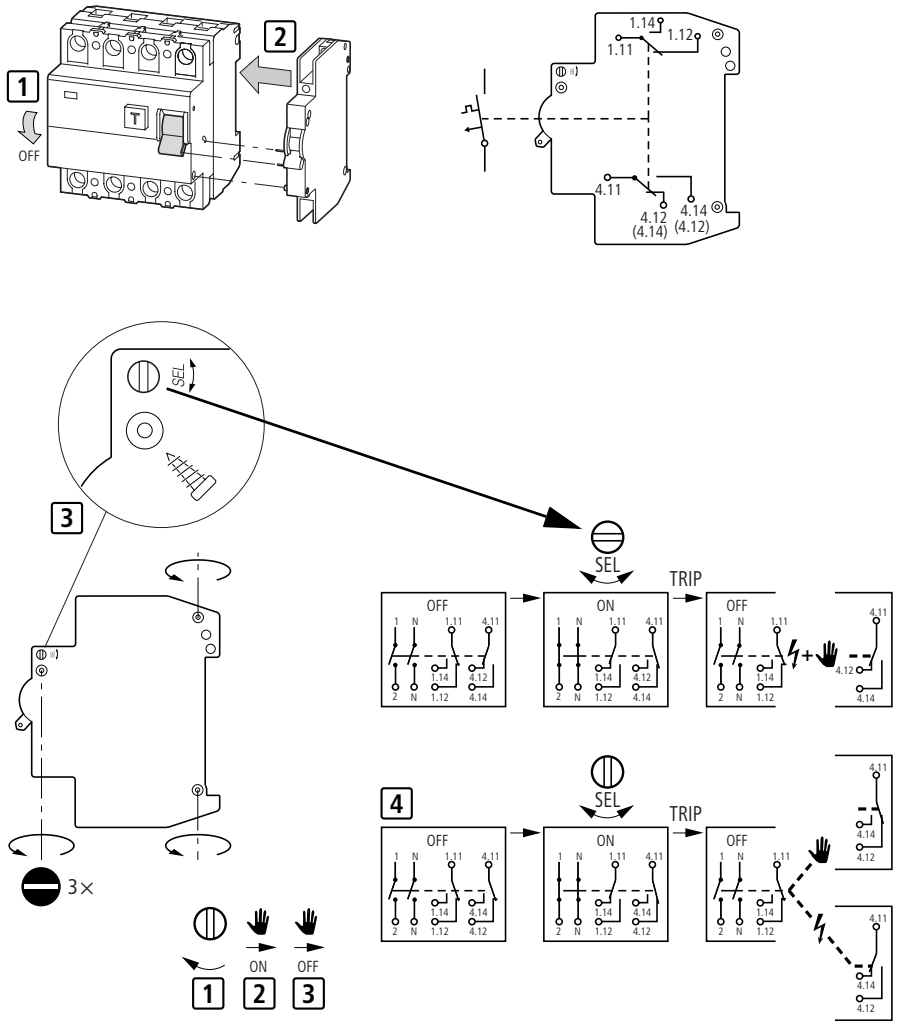


Z 2 0.6 × 35

FI(P)(S)+FIP-XHI11



FI(P)(S)+FIP-XAM002



04/03 AWA1290-2016